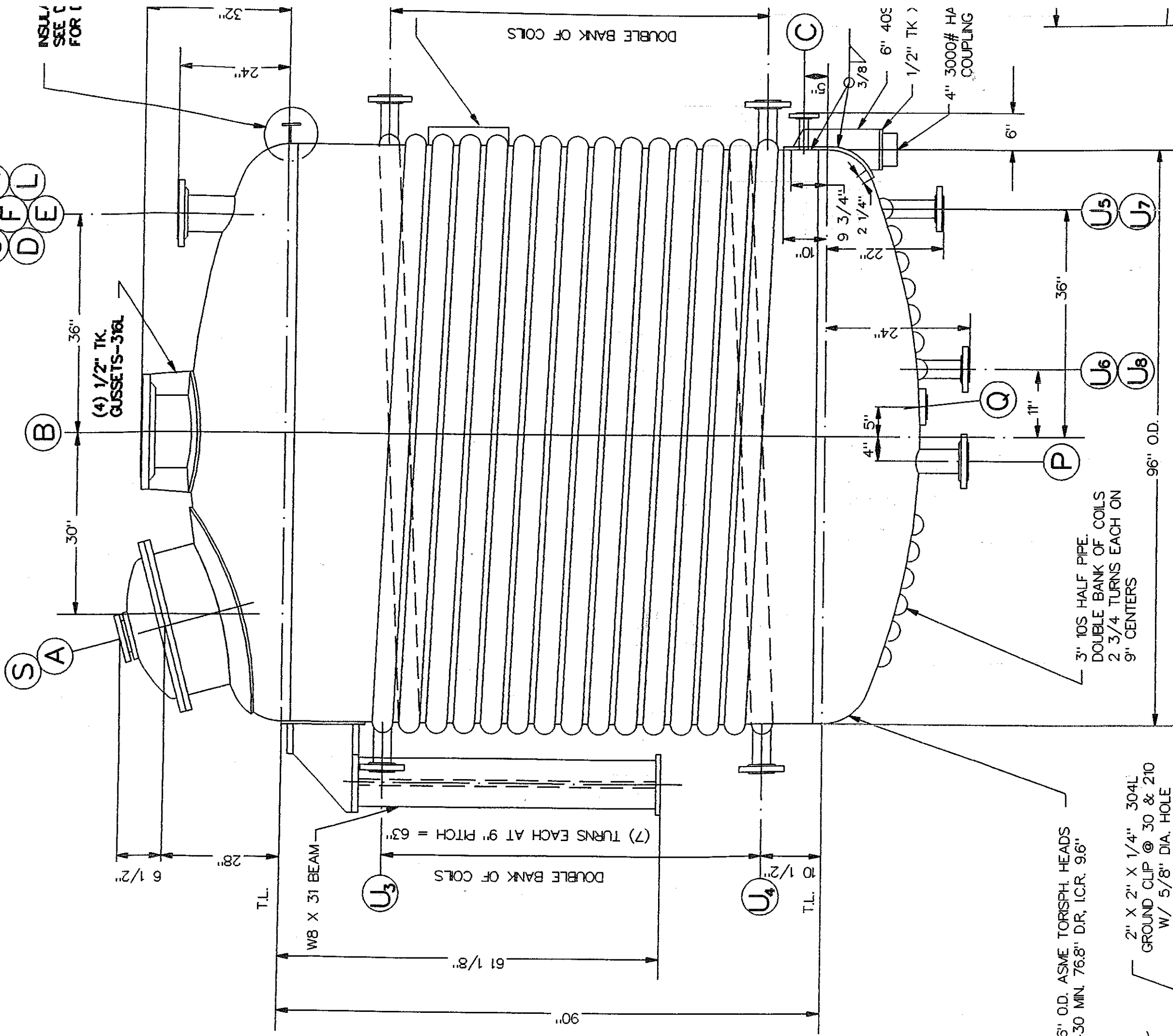
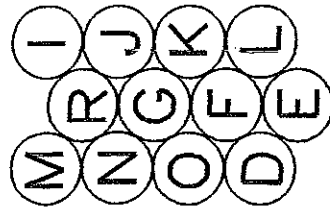
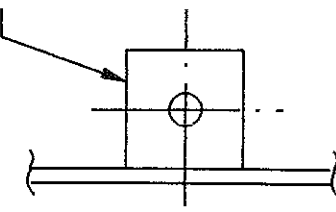


SUPPORT LUG DETAIL



96" O.D. ASME TORISPH. HEADS  
.430 MIN. 76.8" DR, I.C.R. 9.6"

2" X 2" X 1/4" 304L  
GROUND CLIP @ 30 & 210  
W/ 5/8" DIA. HOLE



GROUND CLIP DETAIL



