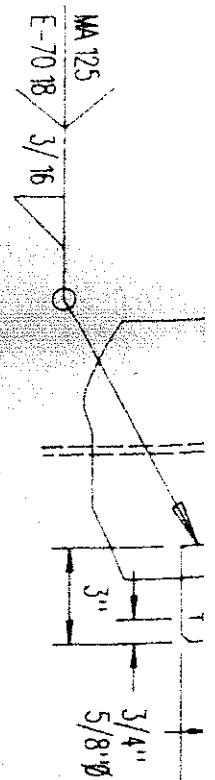
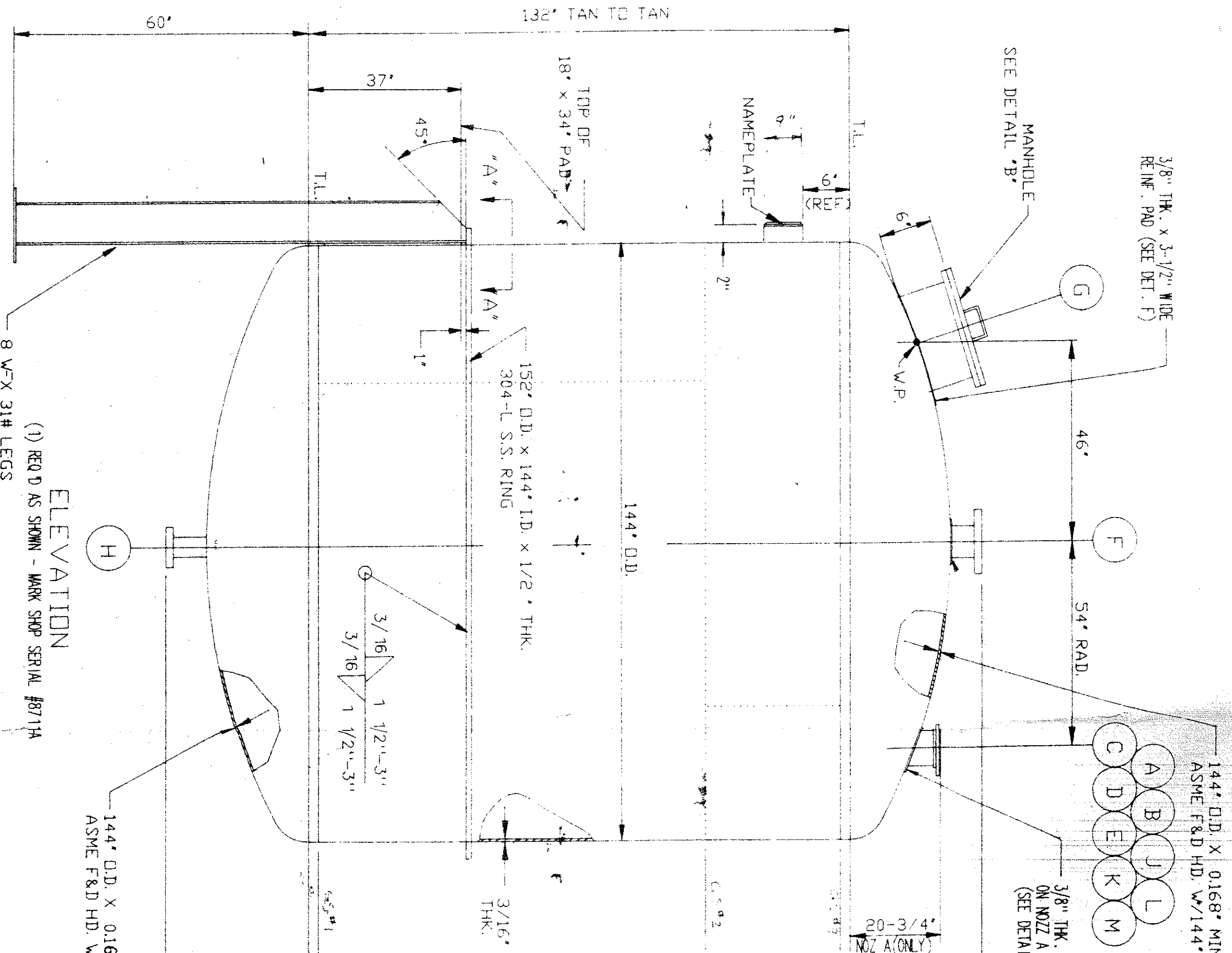


DETAIL "D"  
TYP NOZZLE DETAIL



DETAIL "C"  
GROUNDING LUG  
TYP. TWO PLACE



8 W x 31# LEGS  
(8) REQ'D SEE  
VIEW A-A & PLAN

ELEVATION  
(1) REQ'D AS SHOWN - MARK SHOP SERIAL #8711A

144" O.D. x 0.168" MIN  
ASME F&D HD. W

Ø OF SUPPORT LEG  
(8) REQ'D. EQ. SPACED  
SEE VIEW 'A-A'

GROUNDING LUG  
(ON SUPPORT LEG)  
PER GUIDE G-152  
(2) REQ'D. 180° APART

3" 20"  
H G  
BTM.

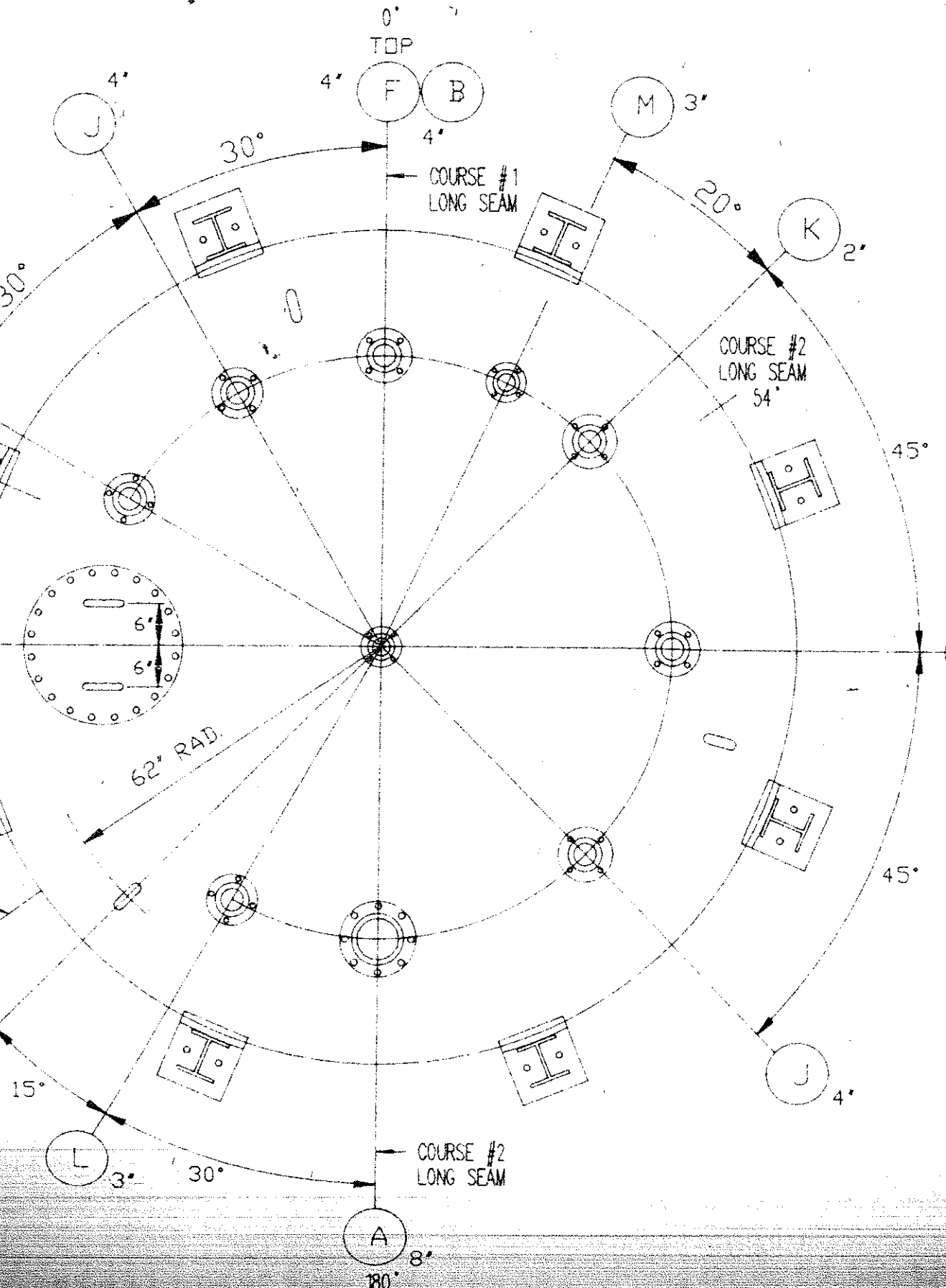
NAMEPLATE

TYP 1/8"

COURSE #1  
LONG SEAM  
234"

Ø OF LIFTING LUG  
1" Ø S.S. (3) REQ'D. EQ. SPACED  
PER MERCK GUIDE G-135

INF PADS



PLAN  
TRUE ORIENTATION

GENERAL NOTES

1. ALL FLANGES UNLESS OTHERWISE NOTED NOZZLE NECK
2. WELDING TO BE LOGITUDINAL DOUBLE BUTT JOINTS TABLE UW-2
3. INTERNAL SURFACE FREE OF SPALLS, SMOOTH, BUT NOT BLASTING, BLASTING PERMITTED PRIOR TO PAINTING
4. ALL EXTERIOR SURFACES FREE OF SPALLS, SMOOTH, BUT NOT BLASTING, BLASTING PERMITTED
5. EXTERNAL SURFACE COAT OF PAINT
6. FOR SHIPPING BE PROTECTED WITH PROTECTIVE THREADS WITH NUMBERS
7. VESSEL TO BE SECTION V BOARD RECORDED

MATERIAL

SHELL, HEADS  
BACK-UP FLANGES  
PLATE FLANGES  
NOZZLE NECKS  
BOLTING  
GASKETS  
SUPPORT LEGS

DESIGN DATA

DESIGN PRESSURE  
DESIGN TEMPERATURE  
HYDROSTATIC TEST  
SPECIFIC GRAVITY  
CORROSION ALLOWANCE  
RADIOGRAPHY

ESTIMATED WEIGHT

GROSS VOLUME  
WEIGHT EMPTY

REFERENCE

NAMEPLATES  
GASKETS  
LIFTING LUGS  
GROUNDING LUGS