

DIRECTION OF ROTATION
DRYING

64 1/8 SWING RADIUS

AIR SUPPLY
90 PSIG
1/2" NPT CONN

JUNCTION
BOX
NEMA 7

150 O.A.H.

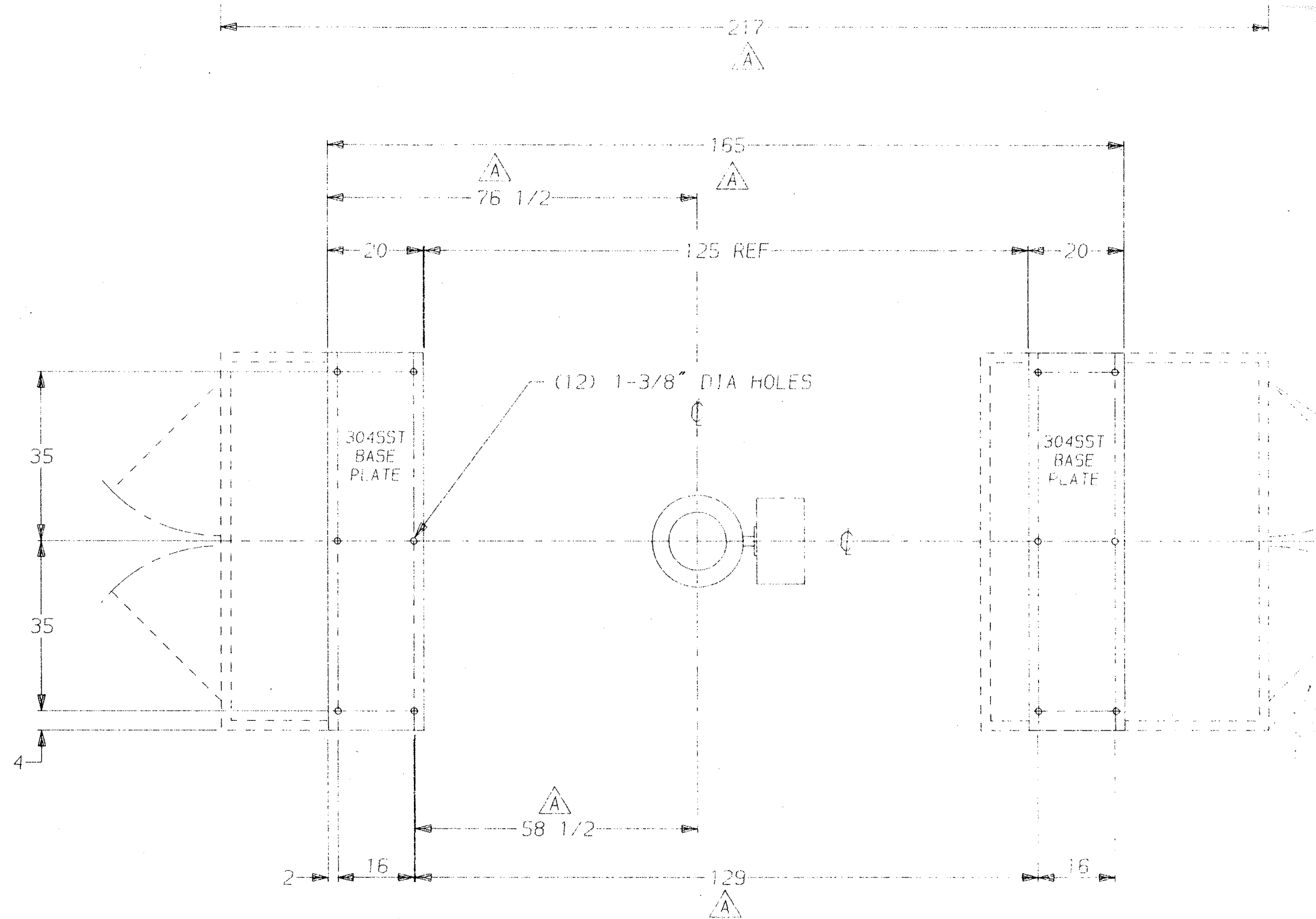
85 7/8

2" 150# FLG CONN-INLET

39

78

01		PART No	MATERIAL LIST DWG No	95110-0000D
QTY	ITEM	PART No / DWG No	DESCRIPTION	MATL CUT
1	01	95110-0100D-01	165 CF DOUBLE CONE JACKETED VESSEL	
1	02	95110-0300D-01	DRIVE SHAFT	
1	03	95110-0400D-01	IDLER SHAFT	
1	04	GB012-0503A-01	VALVE MOUNTING FLANGE-HASTELLOY C276	
1	*05	GB000-0707D-17	AIR BRAKE ASSEMBLY	
1	06	95110-0900D-01	DRIVE SUPPORT	
1	07	95110-1000D-01	IDLER SUPPORT	
1	08	95110-1100C-01	ELECTRIC SCHEMATIC	
1	*09	95110-1240D-01	AIR CIRCUIT	
2	10	GB000-1235D-01	0° CAM & 180° CAM	
2	11	GB000-1201D-03	LIMIT SWITCH MOUNTING BRACKET	
1	*12	95110-1300D-01	ROTARY UNION ASSEMBLY	
1	13	95110-1350C-01	SIPHON PIPE DETAIL	
1	*14	GB000-1455D-11	OVER SHAFT ROTARY UNION (3-PASS)	
1	*15	95110-2300D-01	4" VACUUM LINE ASSEMBLY	
1	16	95110-2801C-01	HEATING SYSTEM PIPING (NOT SHOWN)	
1	17	95110-3200D-01	DRIVE & IDLER ENCLOSURES	
1	18	GB000-0001A-01	FOOT MODIFICATION	
1	19	530A-0011	PINION GEAR-STL, 2-1/2" DP, 26T, 5" F, 20° PA, 3-5/8" BORE, 7/8" X 7/16" KEYWAY, NO HUB PROJ, HARDEN TEETH, (2) SET SCREWS	
1	20	531A-0015	SPUR GEAR-STL, 2-1/2" DP, 186T, 5" F, 20° PA, 7" BORE, 1-3/4" X 3/4" KEYWAY, 2" HUB PROJ	
1	21	54Z0063	REDUCER 'SM-CYCLODRIVE' #H-3195, 17:1 RATIO	
1	22	460Z-0054	MOTOR, 25 HP, 1800 RPM, 324T FRAME, EXPLOSION PROOF CL. 1, DIV. 1, GRPS C&D, 3PH/230-460V/60HZ, APPLICABLE FOR FREQUENCY CONTROLLER FROM 1800 RPM TO 240 RPM, CONDUIT BOX ON RIGHT SIDE	
1	23	55Z0010	SLIDE BASE 'RELIANCE' #42384-F, 324T FRAME	
1	24	51E0412	SHEAVE, 5V15.0, 2 GRV	
1	25	48A0073	TAPER LOCK BUSHING-STL, #3020, 1-3/4" BORE	
1	26	5250032	BELT 5V1180 (37.4 C.D. MATCHES SFT)	



DESIGN DATA	
INTERNAL PRESSURE: FULL VACUUM/15 PSI	YES
JACKET PRESSURE: 50 PSI	INS
TEMPERATURE: 370° F	FRA
TEST DATA	
INTERNAL PRESSURE: BY VENDOR	EXT
JACKET PRESSURE: BY VENDOR	BE I
A.S.M.E. CODE CONSTRUCTION STAMP: REQ'D.	A.S.P.

ING
IA



1	27	51E0332	SHEAVE, 5V12.5, 2 GRV
1	28	48A0075	TAPER LOCK BUSHING-STL, #3020, 2-1/8" BORE
1	29	470Z-0008	PILLOWBLOCK 'LINK BELT' #P-B22579FH, 4-15/16 SIZE
1	30	47Z0117	PILLOWBLOCK 'DODGE' #SAF-XT, 8" SIZE, EXP TYPE
4	31	31A0109	HEX HD SCR-STL, 7/8-9 x 5" LG
4	32	32A0007	LOCKWASHER-STL, 7/8" SIZE
4	33	29A0007	HEX NUT-STL, 7/8-9
4	34	31A0423	HEX HD SCR-STL, 1 1/4-7 x 6-1/2" LG
4	35	32A0019	LOCKWASHER-STL, 1-1/4" SIZE
4	36	29A0026	HEX NUT-STL, 1 1/4-7
1*	37	232J-0021	12" BUTTERFLY VALVE, WAFFER TYPE, 'DURCO' MODEL #161-V, VACUUM SERVICE & 15 PSI, HASTELLOY C276 DISC & STEM, TEFLON SEAT w/VITON BACKING FOR HIGH TEMP (350°F) w/DOUBLE ACTING ACTUATOR 'AUTOMAX' MODEL #S200
-	-	-	-
12	38	31J0132	HEX HD SCR-316SST, 1/2-13 x 5" LG
12	39	32J0007	LOCKWASHER-316SST, 1/2" SIZE
12	40	29J0007	HEX NUT-316SST, 1/2-13
2*	41	45Z0000	LIMIT SWITCH 'ALLEN-BRADLEY' #802X-A7W1
1*	42	95110-0237D-01	HINGED ACCESS COVER ASSEMBLY

32 SWING RADIUS
TYP

(2) HINGED ACCESS DOORS
TYP BOTH ENCLOSURES

* INDICATES RECOMMENDED SPARE PARTS

B	CC	1/96	1	CHANGED ITEM 22 FROM 284T FRAME MOTOR TO 324T FRAME, CHANGED ITEM 23 FROM 284T FR TO 324T FR SLIDE BASE, CHANGED BUSHING SIZE ITEM 28 FROM 1-7/8" BORE TO 2-1/8" BORE	
A	CC	11/95		CHANGED WITH OF SUPPORT FRAMES FROM 96" WIDE TO 78" WIDE & INCREASED LENGTH OF UNIT BY 2-1/2" TO MATCH CUSTOMERS EXISTING MOUNTING PADS, CHANGED MOTOR FRAME SIZE ON DRIVE	
REV	DRN	CHK	DATE	APPR	DATE LAST REVISED: 01/15/96

BRANE SET PRESSURE 66 PSI (MAXIMUM)

-MATERIALS & FINISHES-

JACKET: HASTELLOY C276 STRAIGHT JACKET; INCONEL POSITIONING JACKET: 1-1/2 THK w/304LSSST SHEATHING CONSTRUCTION: CARBON STL w/SSST BASE PLATE
 ALL FINISH: (GIP30) SIMILAR TO #4 POLISH, THE SURFACE WILL BE SMOOTH, UNIFORM & FREE OF FABRICATION, MARKS & PIT MARKS. APPROXIMATELY 15-25 MICRO-INCH FINAL SURFACE RATING WILL RESULT. ABOUT 200-240 GRIT.
 ALL FINISH: (GES2) BUFF POLISH, ALL WELDS WILL BE SMOOTH & FLUSH. BUFF ENTIRE OUTER SURFACE TO OBTAIN RM APPEARANCE.

-GENERAL NOTES-

VESSEL SPEED (RPM) ----- 1.6 TO 12 ±3%
 POSITIONING SPEED (RPM) ----- 1.6
 MAX MATL DENSITY (#/CF) ----- 65
 AGITATOR SPEED (RPM) ----- N/A
 EMPTY WEIGHT (LBS) ----- 14,000
 TOTAL VOLUME (CF) ----- 268
 WORKING VOLUME (CF) MAX ----- 165
 WORKING VOLUME (CF) MIN ----- 82.5
 ALL UNMACHINED CARBON STEEL SURFACES TO BE PAINTED WITH ONE COAT OF STEEL-IT

TITLE 165 CF DOUBLE CONE VACUUM DRYER				CUSTOMER: MERCK & COMPANY LOCATION: ATLANTA, GA. JOB No: D-95110 P.O. No: G114323U	
FOR MERCK & COMPANY				CAD-DIR GEMCO-JOBS>GVD95110	
DESIGN	DRN	C.C.	CHK	APPR	REFERENCE 95034-0000D
DATE 31 OCT 1995	GEMCO 30 Shalloy Avenue Middlesex, NJ 08846		GENERAL MACHINE COMPANY OF NEW JERSEY BLENDER DIVISION		PLOT -
SCALE 1/24	DWG NO. 95110-0000D				REV B