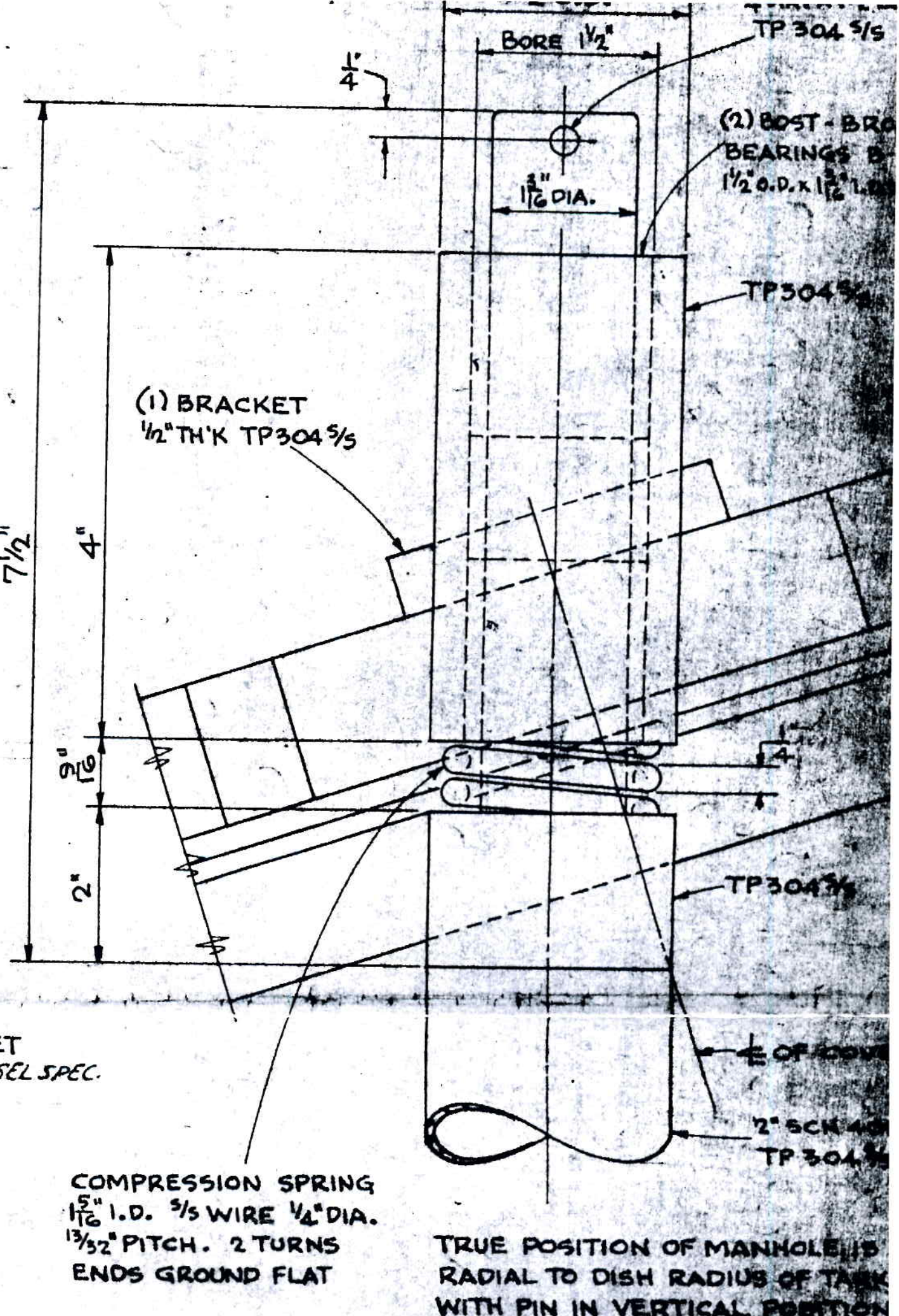


FLANGE DETAIL



PIVOT DETAIL

COMPRESSION SPRING
1 5/16" I.D. 5/5 WIRE 1/4" DIA.
1 3/32" PITCH. 2 TURNS
ENDS GROUND FLAT

04 5/5
D

PRINTED ENG. DIV.
JAN 18 1973
DESIGN SECTION

SEE VESSEL DRAWING FOR
TYPE OF MATERIAL MARKED ⊗

~~THIS DRAWING IS APPROVED WITH THE UNDERSTANDING THAT SUCH APPROVAL DOES NOT RELIEVE THE CONTRACTOR OF ANY OBLIGATIONS OR RESPONSIBILITIES UNDER THE CONTRACT NOR FROM RESPONSIBILITY FOR ANY ERRORS ON THIS DRAWING~~
Do Not USE THIS AS A CERTIFIED PRINT.
APPROVED BY: [Signature]
[Signature]
RANK & COMPANY
RAHWAY, N. J.

ESTIMATE NO. 25-734
P. O. NUMBER 806745
SPEC. NO. B-47
DIN: TP-532

REV.	BY	DATE	DESCRIPTION
B	Tomy G.	NOV 20 72	REDRAWN
A	HGK	7-4-69	SLOTS WERE 3/4" WIDE

ALLOY FAB INC.		
SOUTH PLAINFIELD, N.J.		
16" MANHOLE WITH 4" SIGHT GLASS IN COVER		
WORK ORDER	DR. BY - H.E.D.	DATE 1-
1957	CHKD BY - K	0-62